



VERTICAL GARDEN



FUSIONS  by AGF

FREE PATTERN





VERTICAL GARDEN

QUILT DESIGNED BY *AGFstudio*



RAINFOREST FUSION

FABRICS DESIGNED BY *AGFstudio*



FUS-RF-1504
CLOVER GROVE RAINFOREST



FUS-RF-1505
TROPICAL RAINFOREST



FUS-RF-1500
ARTISAN RAINFOREST



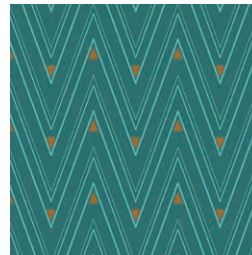
FUS-RF-1507
BLOMMA GARDEN RAINFOREST



FUS-RF-1502
LAMINA RAINFOREST



FUS-RF-1506
KILIM INHERIT RAINFOREST



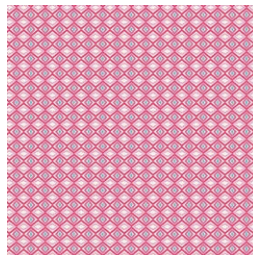
FUS-RF-1508
COLLAR ENDS RAINFOREST



FUS-RF-1503
AURA FLETCHINGS RAINFOREST



FUS-RF-1509
BOUND RAINFOREST



FUS-RF-1501
DIAMONDS RAINFOREST



VERTICAL GARDEN

FINISHED SIZE | 60' x 80'

FABRIC REQUIREMENTS

Fabric A	PE-414	¼ yd.
Fabric B	FUSRF-1505	2 ¼ yd.
Fabric C	PE-412	½ yd.
Fabric D	FUSRF-1506	⅞ yd.
Fabric E	FUSRF-1500	⅝ yd.
Fabric F	PE-408	¾ yd.
Fabric G	FUSRF-1507	⅝ yd.
Fabric H	FUSRF-1509	¾ yd.
Fabric I	FUSRF-1501	¼ yd.
Fabric J	PE-454	⅞ yd.

BACKING FABRIC

FUSRF-1500 4 yds. *(Suggested)*

BINDING FABRIC

FUSRF-1506 (Fabric **D**) *(Included)*

CUTTING DIRECTIONS

¼" seam allowances are included.

- Two (2) 2 ½' x WOF strips from fabric **A**.
- Thirty one (31) 2 ½' x WOF strips from fabric **B**.
- Six (6) 2 ½' x WOF strips from fabric **C**.
- Six (6) 2 ½' x WOF strips from fabric **D**.
- Seven (7) 2 ½' x WOF strips from fabric **E**.
- Nine (9) 2 ½' x WOF strips from fabric **F**.
- Seven (7) 2 ½' x WOF strips from fabric **G**.
- Nine (9) 2 ½' x WOF strips from fabric **H**.
- Two (2) 2 ½' x WOF strips from fabric **I**.
- Twelve (12) 2 ½' x WOF strips from fabric **J**.

CONSTRUCTION

Sew all rights sides together with ¼" seam allowance.

- You will sew the strips together into six (6) different strip sets and cut 3' wide strips from the sets at a 45° angle.
- To maximize the fabric used, don't match ends of the strips, instead place the next strip in the set at 2" away from the end of the previous strip.
- **Strip sets A, B and C** will go in one direction, and **strip sets D, E, F** are mirror images and will go in the other direction.
- Before sewing your strips together pin them and refer to the diagrams below to make sure your strips are angled in the right direction.
- Align your 45° mark on the ruler with the end of the strip set and cut of the ends of the strip to make a smooth edge.
- Then align your ruler's edge to the angled edge and measure out 3' from the edge and cut the strip. Cut the number of strips called for each strip set as below.

Strip Set A, Cut 16 strips



DIAGRAM 1

Strip Set D, Cut 14 strips



DIAGRAM 2

Strip Set B, Cut 6 strips

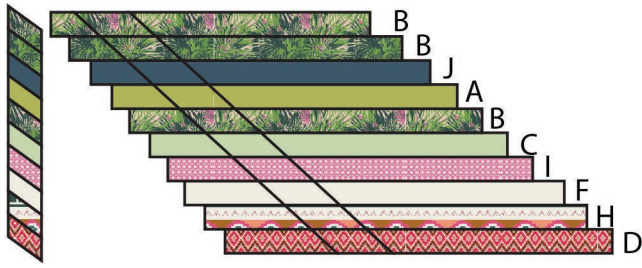


DIAGRAM 3

Strip Set E, Cut 4 strips

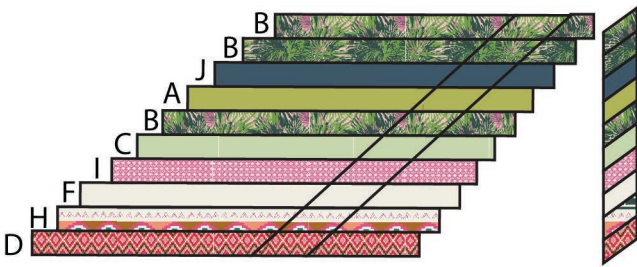


DIAGRAM 4

Strip Set C, Cut 8 strips

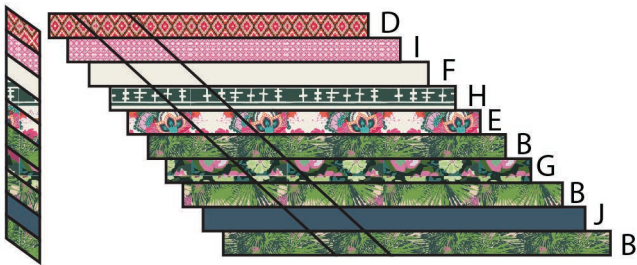


DIAGRAM 5

Strip Set F, Cut 12 strips

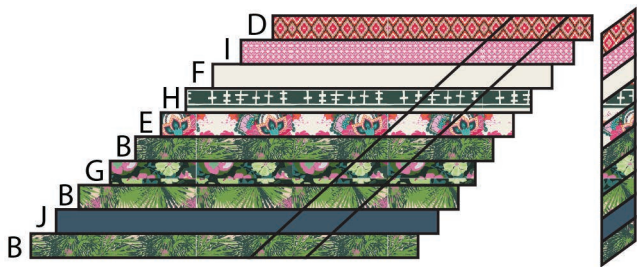


DIAGRAM 6



- Sew together strips to make a column. Columns are paired with the first column consisting of combinations of **strips A, B and C** and the second column in the pair consisting of **strips D, E and F**.
- The beginning and end of a column will be a strip that was split into two pieces with a seam-ripper.
- Each strip has 10 pieces to it and the diagram will indicate which portion of the strip goes on the top and which goes on the bottom.

Columns 1-10

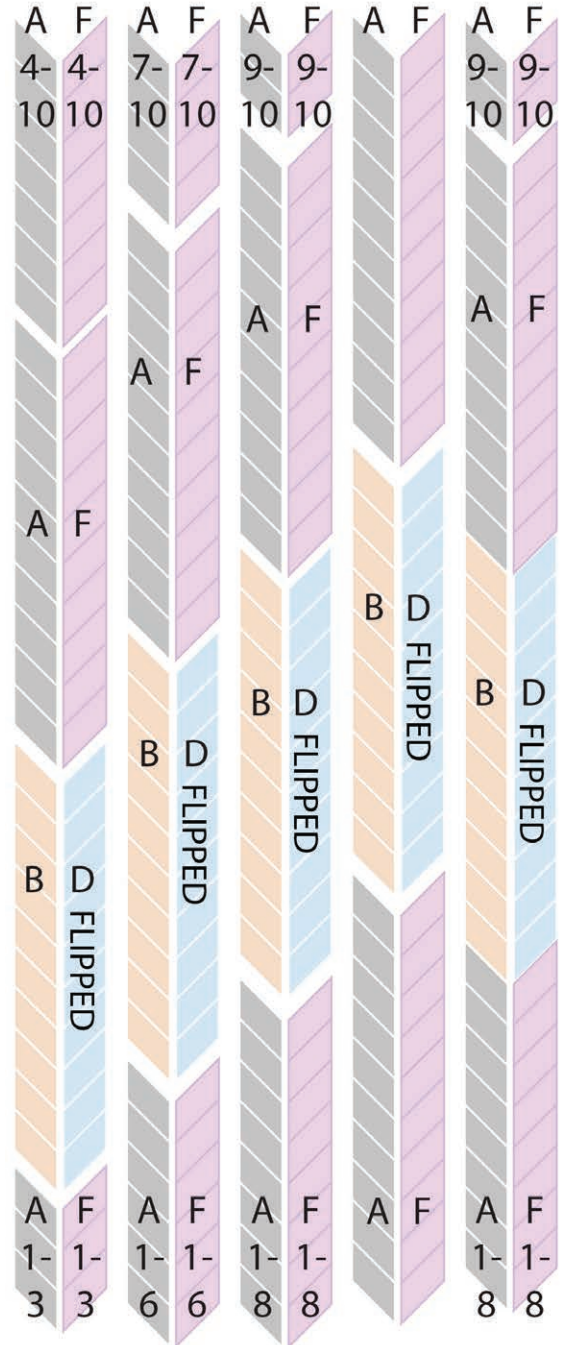


DIAGRAM 7

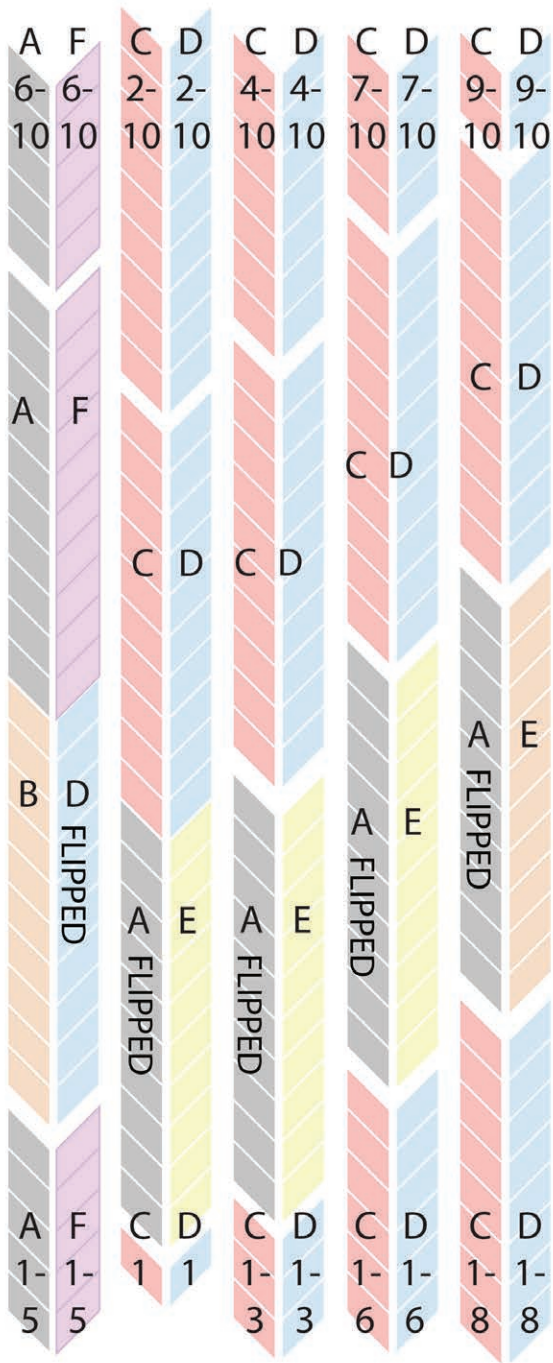


DIAGRAM 8



DIAGRAM 9

- Trim off the points to get a quilt top that is 60' x 80'.



DIAGRAM 10

ASSEMBLING THE TOP

- Sew the columns into pairs, then sew those columns together, aligning the tops.

QUILT ASSEMBLY

Sew rights sides together.

- Place BACKING FABRIC on a large surface wrong side up. Stretch it with masking tape against that surface.
- Place BATTING on top of backing fabric.
- Place TOP on top of the batting with right side facing up. Smooth away wrinkles using your hands.
- Pin all layers together and baste with basting thread, using long stitches. You can also use safety pins to join the layers.
- Machine or hand quilt starting at the center and working towards the corners. Remember that quilting motifs are a matter of personal preference. Have fun choosing yours!
- After you finished, trim excess of any fabric or batting, squaring the quilt to proceed to bind it.

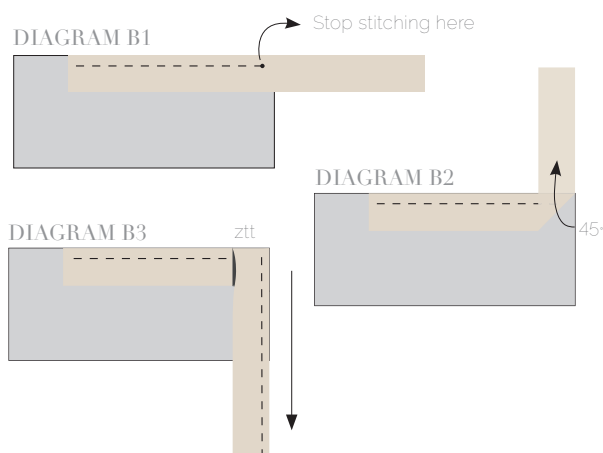
BINDING

Sew rights sides together.

- Cut enough strips $1\frac{1}{2}$ ' wide by the width of the fabric **D** to make a final strip 290' long. Start sewing the binding strip in the middle of one of the sides of the quilt, placing the strip right side down and leaving an approximated 5' tail. Sew with $\frac{1}{4}$ ' seam allowance (using straight stitch), aligning the strip's raw edge with the quilt top's raw edge.
- Stop stitching $\frac{1}{4}$ ' before the edge of the quilt (**DIAGRAM B 1**). Clip the threads. Remove the quilt from under the machine presser foot. Fold the strip in a motion of 45° and upward, pressing with your fingers (**DIAGRAM B 2**). Hold this fold with your finger, bring the strip down in line with the next edge, making a horizontal fold that aligns with the top edge of the quilt (**DIAGRAM B 3**). Start sewing at $\frac{1}{4}$ ' of the border, stitching all the layers. Do the same in the four corners of the quilt.
- Stop stitching before you reach the last 5 or 6 inches. Cut the threads and remove the quilt from under the machine presser foot. Lay the loose ends of the binding flat along the quilt edge, folding the ends back on themselves where they meet. Press them together to form a crease. Using this crease as the stitching line, sew the two open ends of the binding with right sides together (you can help yourself marking with a pencil if the crease is difficult to see).

x x

- Trim seam to $\frac{1}{4}$ ' and press open. Complete the sewing. Turn binding to back of the quilt, turn raw edge inside and stitch by hand using blind stitch.



artgalleryfabrics.com

NOTE: While all possible care has been taken to ensure the accuracy of this pattern, We are not responsible for printing errors or the way in which individual work varies. Please read instructions carefully before starting the construction of this quilt. If desired, wash and iron your fabrics before starting to cut.

© 2018 Courtesy of Art Gallery Quilts LLC. All Rights Reserved.